

Cartoons Enhance Understanding of Disability Culture



Series "DIFFERENT TOGETHER" Part...

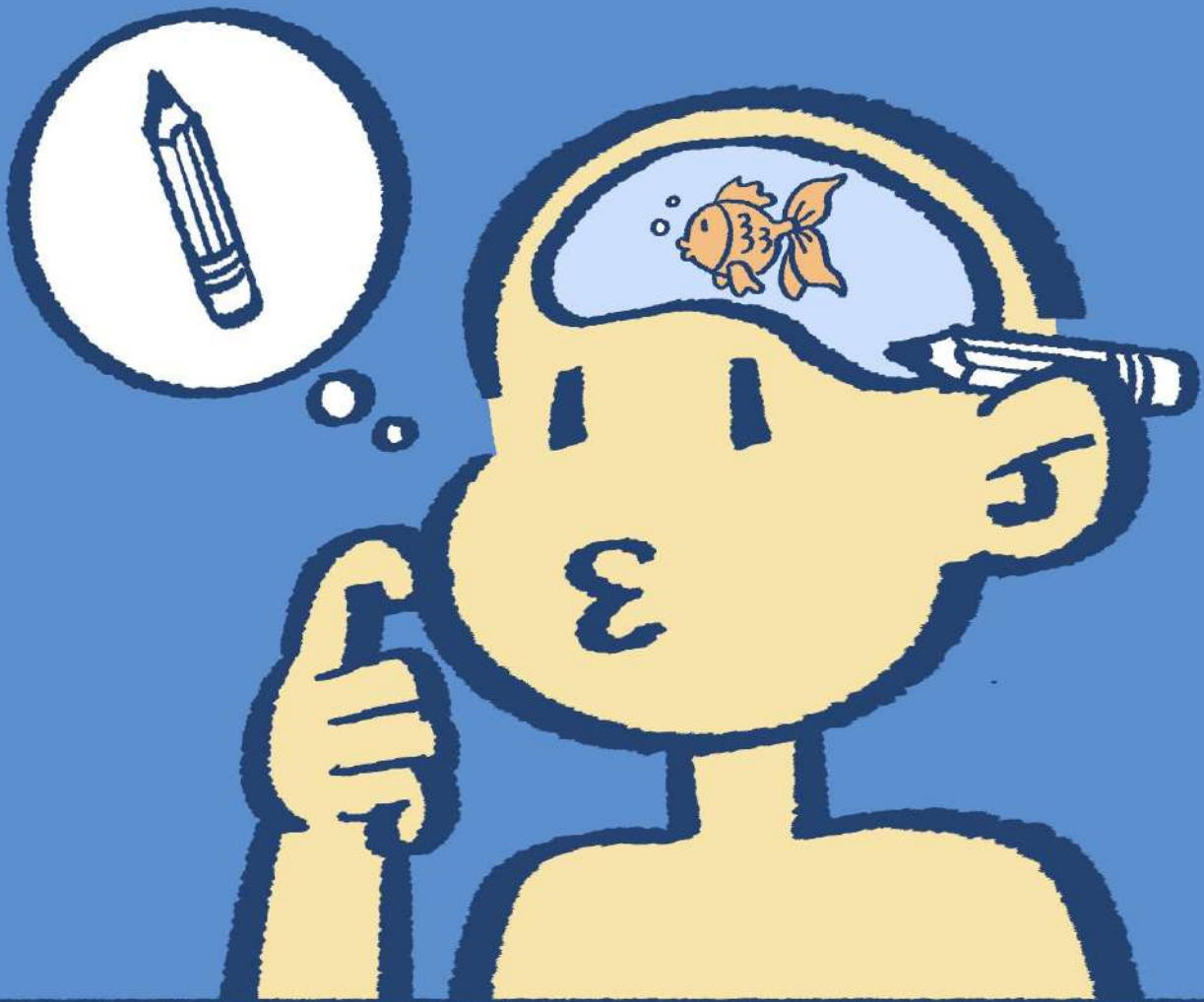


Under the Project of Research and Development of the Disability Culture Cartoons  
with the Participation of Disabilities and all Sectors

Supported by Thai Media Fund



You've probably heard the metaphor for forgetful persons as they had the goldfish brain.





WRONG!! Goldfish do not have a 3-second-memory.

In fact they can remember for weeks, months, or even a year.

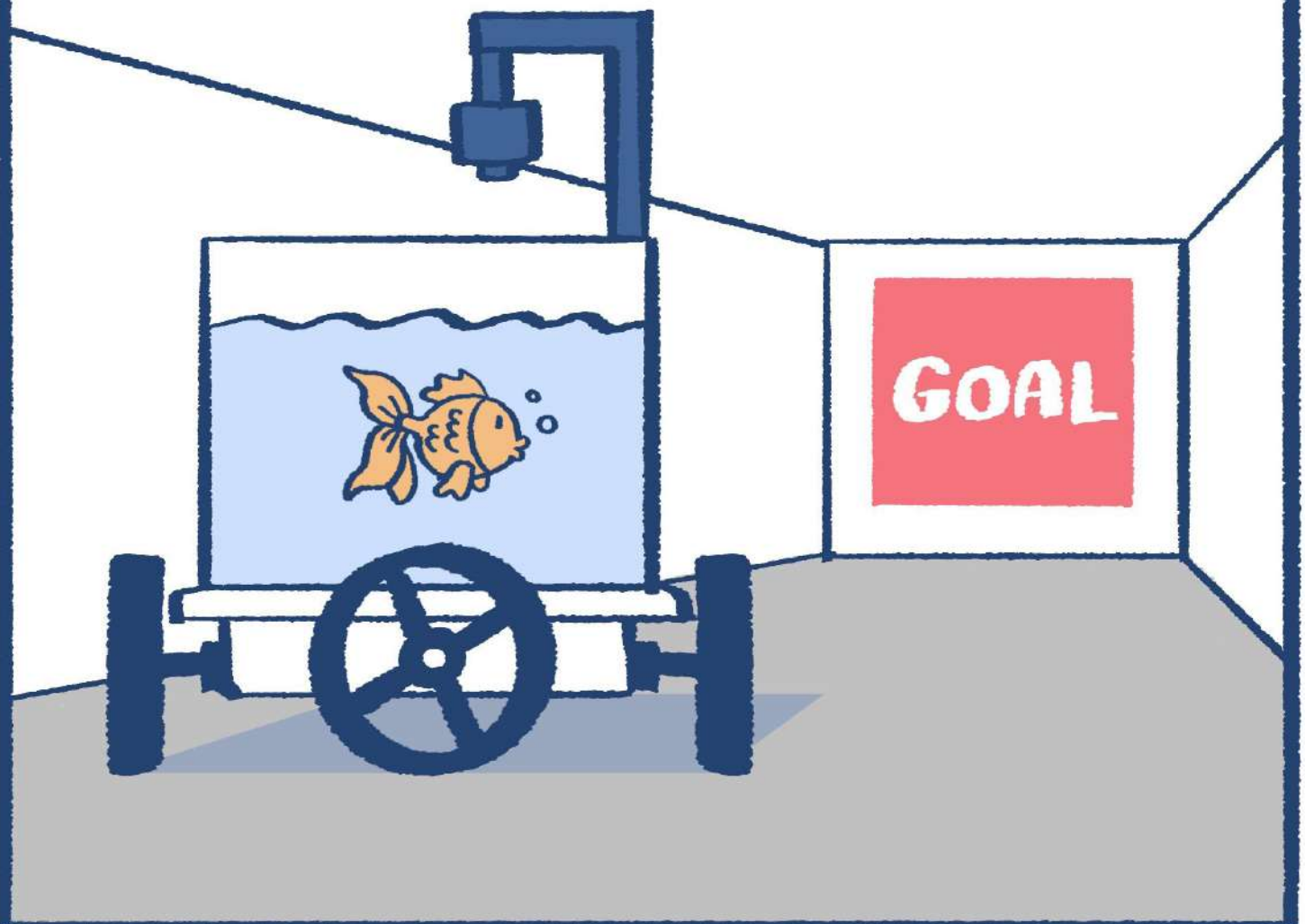


Plus, it can distinguish directions,  
understand time system.  
The most important is it can learn.





A goldfish was tested on a special vehicle that moved as it swam.  
And teach it to drive to the destination.





It turns out that the goldfish  
can do it in 10 days.  
Better than you think, right?



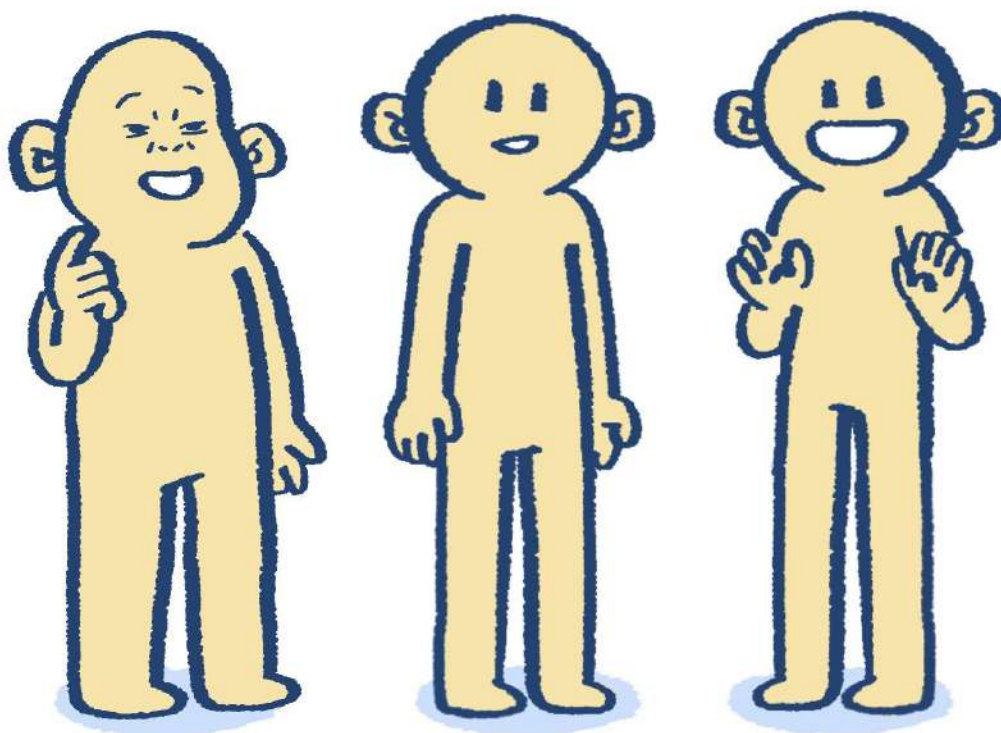


Now, let's turn the goldfish to...





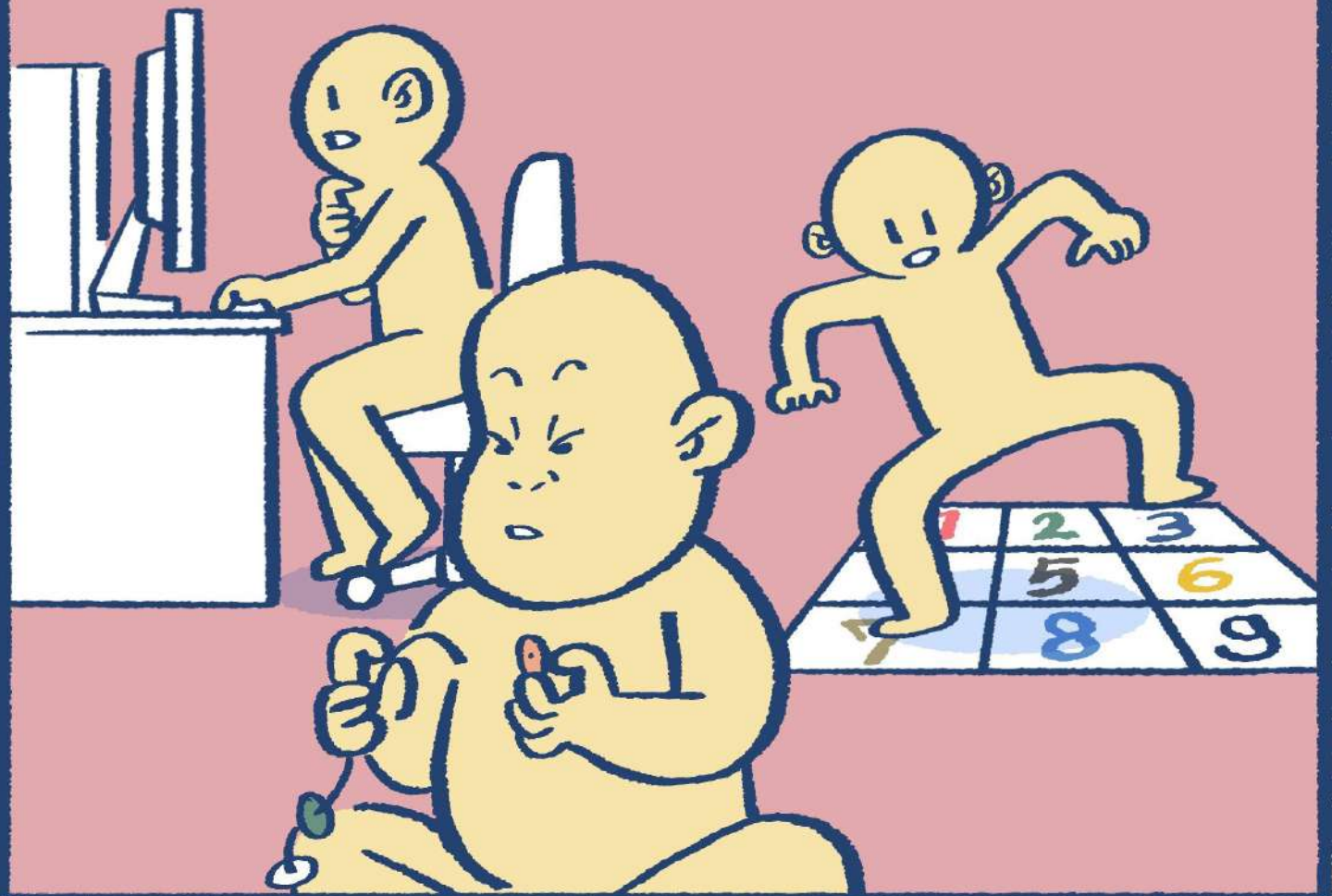
# Intellectual - Learning Disability - Autism





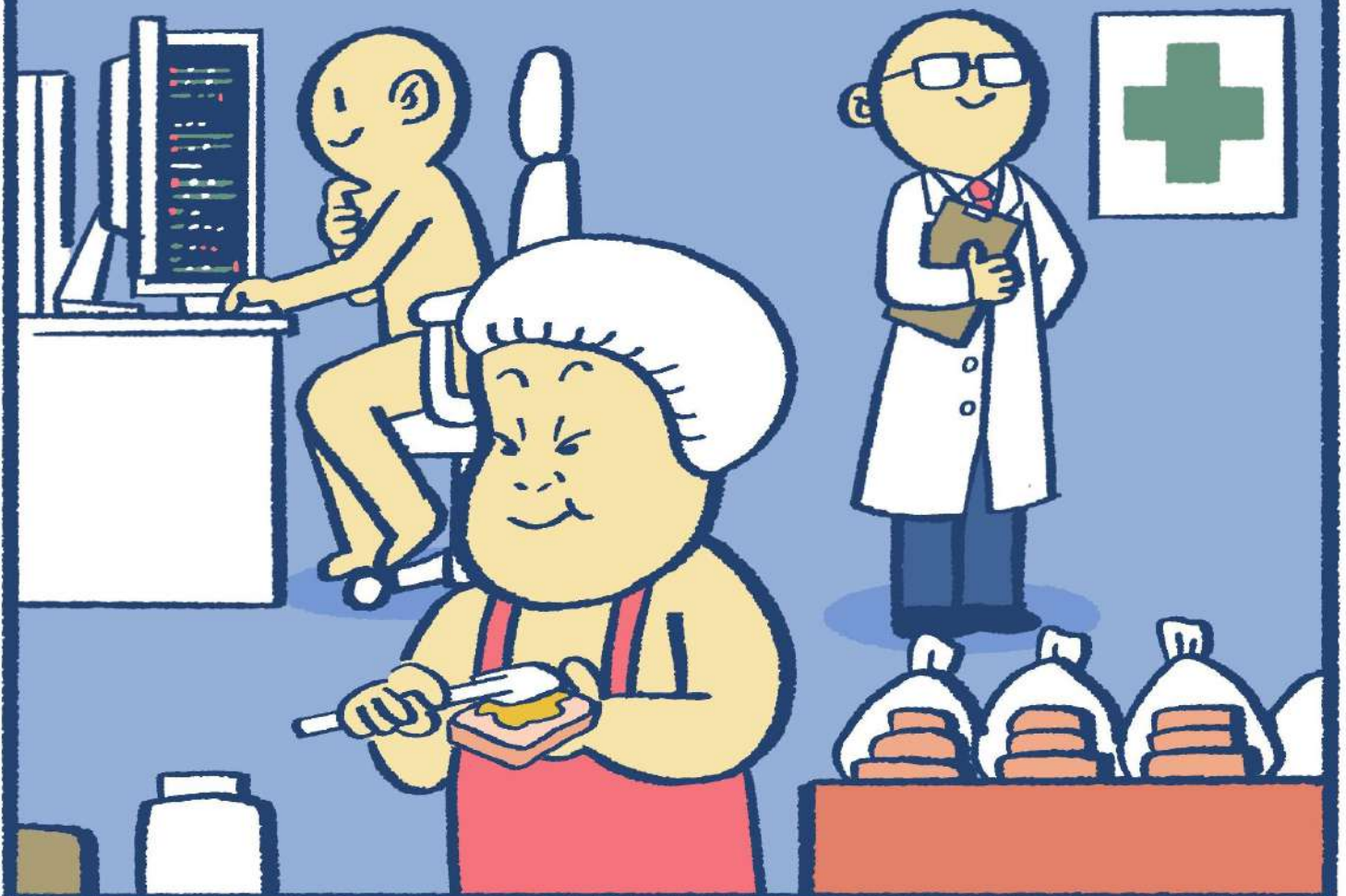


They can also learn and repetition.  
Just need a suitable way that will improve each of them.





With proper encouragements and opportunities.  
They have more potential than you think.





**We each have  
our own  
potential**

Intellectual - Learning Disability - Autism  
are often excluded from the social system  
although everyone can improve.

With appropriate learning process,  
people's open minded and opportunities.  
They will be able to do a lot for the world.